

FOCAL.AGENT

Property Photography: The Brief

Required Equipment



DSLR Camera



Wide-Angle Lens
16mm FF
10mm CF



Tripod



Flashgun



20 Photos
(.jpg > 3MB)

Quick Tips for Photos

- Always **shoot at waist height** and keep the camera level to create **straight vertical lines**
- Point the **flash at the corner of the ceiling behind you** for good diffusion of light
- Stand in the **farthest corner of each room** to maximise the space you are capturing
- Include two shots of the exterior (one angled; one straight on) and the garden or garage
- Take a few angles of each room for maximum coverage

Example Property Shots



Exterior Shot (Straight)



Exterior Shot (Angled)



Living Room



Kitchen



Dining Area



Bathroom

Delivery

Please send your floor plan to recruitment@focalagent.com via www.focaltransfer.com

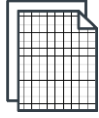
FOCAL.AGENT

Floor Plan Design: The Brief

Required Equipment



Laser Measurer



Graph Paper



Pencil

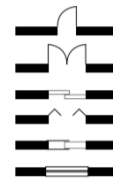
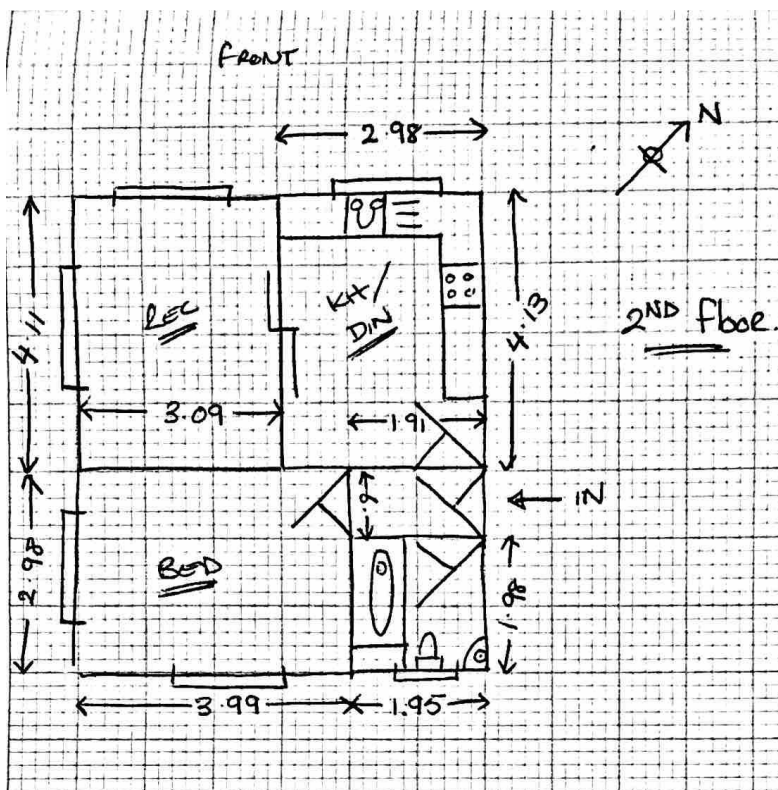


1 Floor Plan

Quick Tips for Floor-Plans

- Measure from **wall to wall** in each room and **include garages** where necessary
- A good rule of thumb is that **1 large square is equal to 1 metre squared (m²)**
- Take a **minimum of two measurements per room** (length and width) to prevent errors
- Make sure windows are placed correctly, doors hinge the right way, etc in line with other symbols
- **Keep your lines straight**, as wobbly lines can be confused for curves

Sample Floor Plan



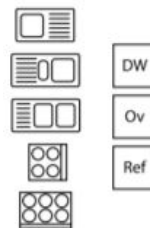
Access

Single Door
Double Door
Sliding Door
Bi-Fold Door
Pocket Door
Window



Walls

Exterior Wall
Interior Wall
Interior with Fireplace



Kitchens

Single Sink
1½ Bowl Sink
Double Sink
4-Ring Hob
6-Ring Hob
Dishwasher
Oven
Refrigerator



Bathrooms

Toilet / Bidet
Bath
Shower
Wash Basin
Corner Bath

Delivery

Please send your floor plan to recruitment@focalagent.com via www.focaltransfer.com